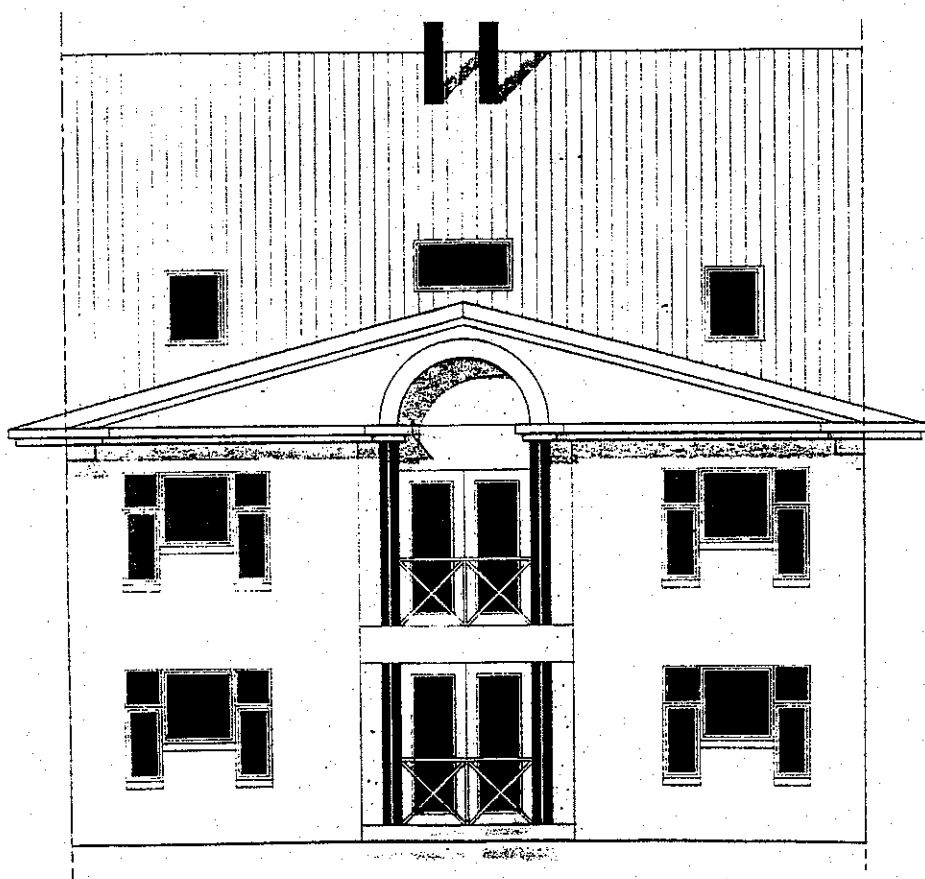
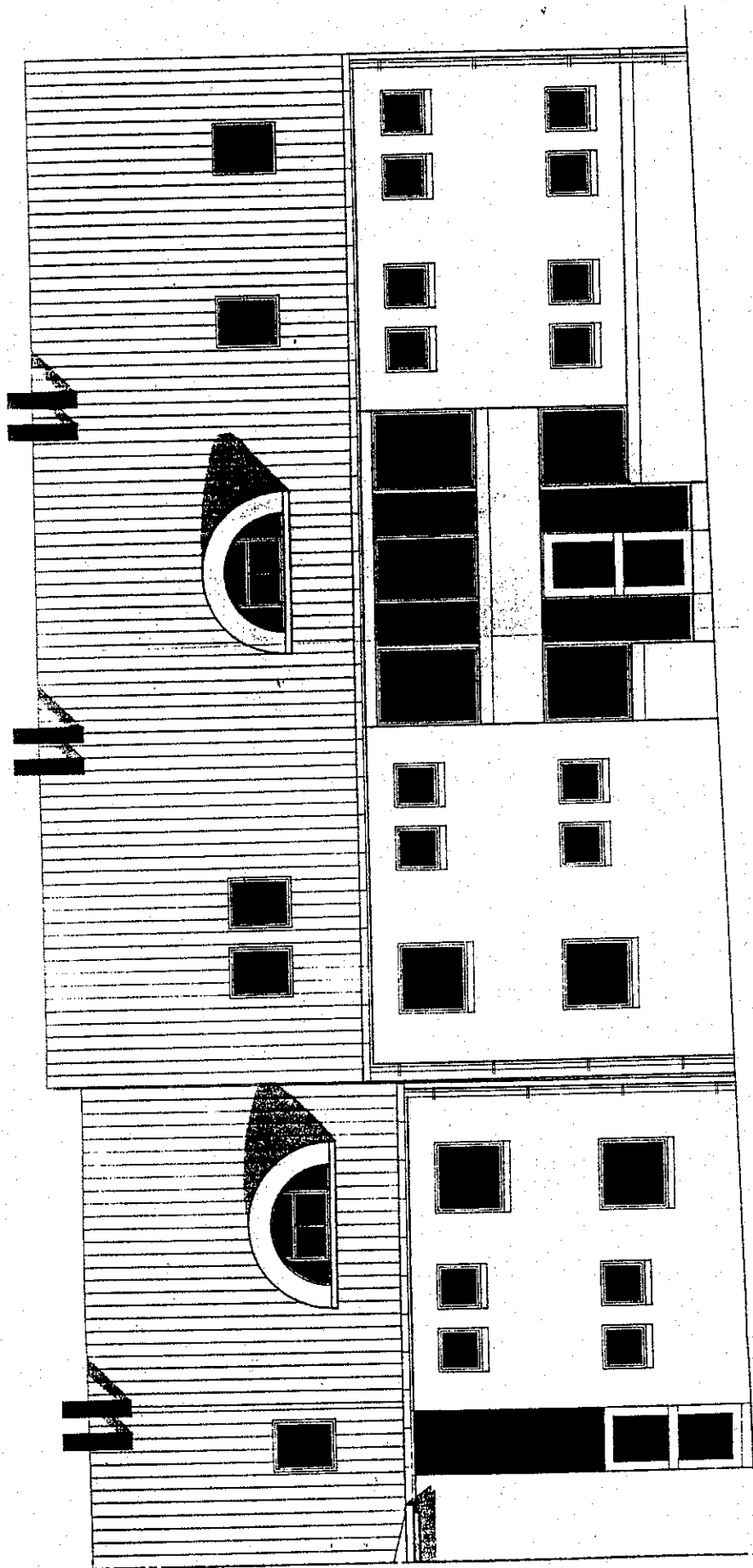


RESIDENTIE DE BIJLOK

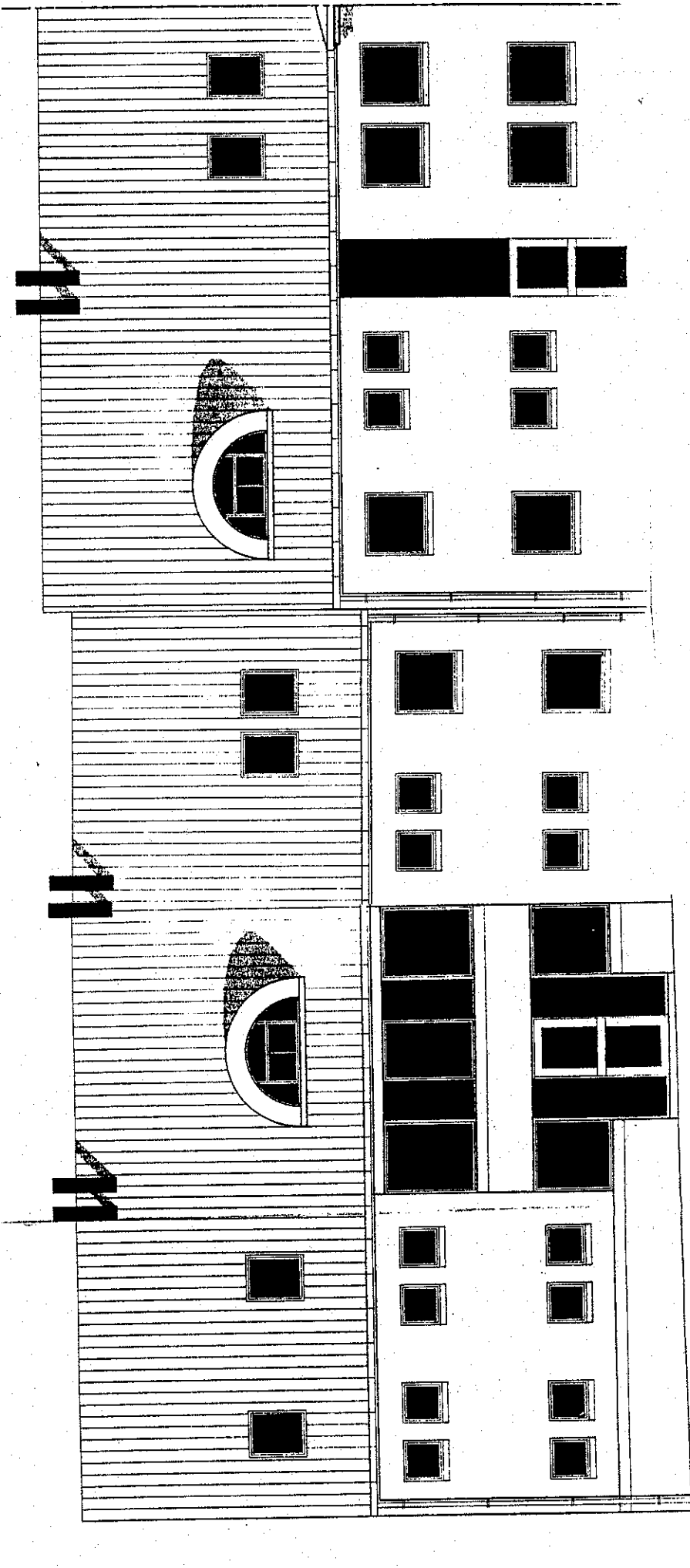
te Herent



HOEK MECHELSESTEENWEG en BIJLOKSTRAAT



GEVEL MECHELSE STEENWEG



GEVEL BIJLOKSTRAAT

BLOKSTRAAT

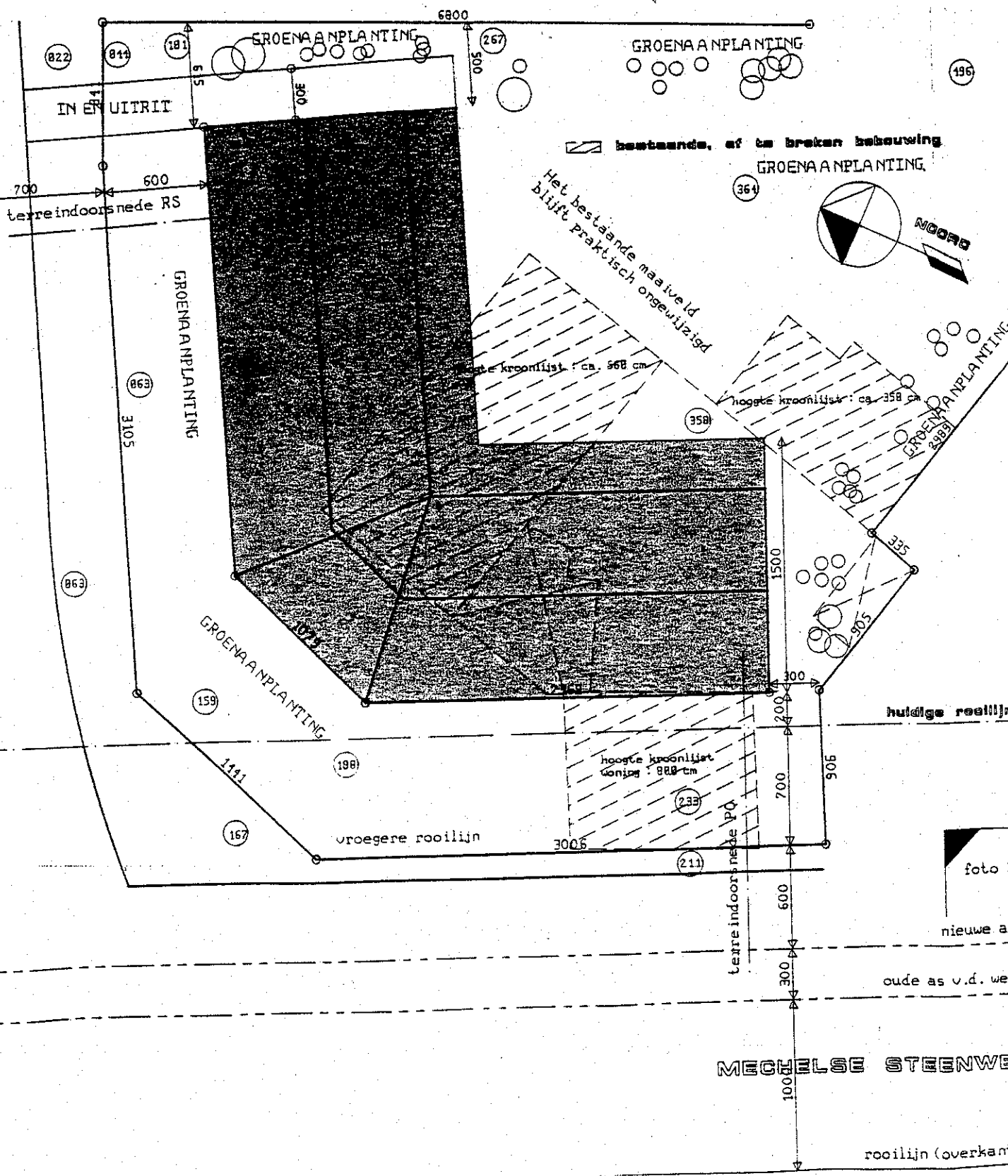


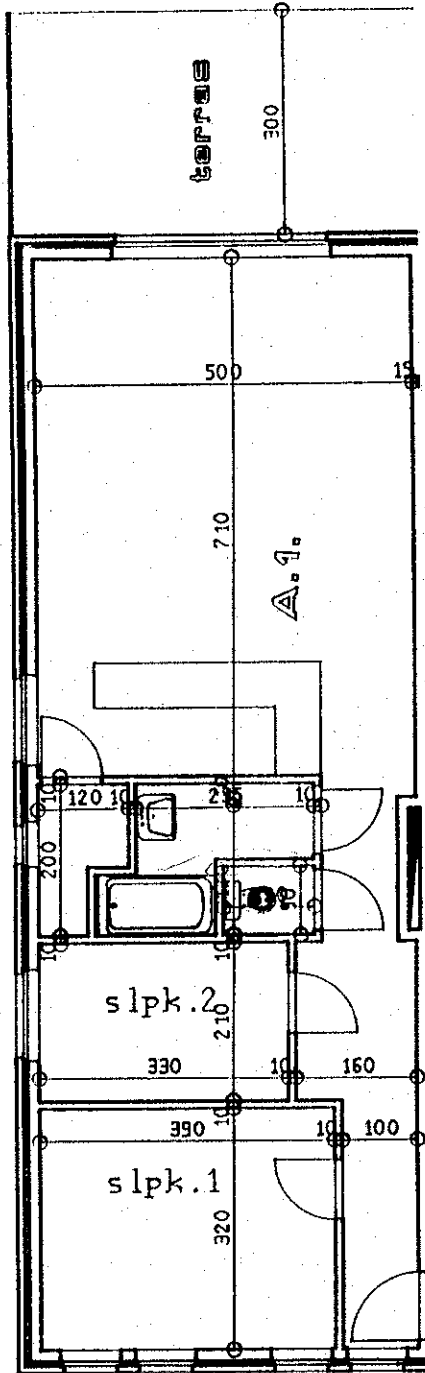
foto 2
 nieuwe as
 oude as v.d. weg

MEGELSE STEENWEG

rooilijn (overkant)

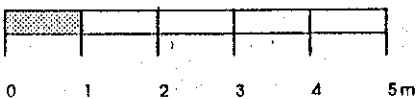
A1 : gelijkvloers

- 2 slaapkamers
- opp. app. : 82 m²
- terras : 16 m²
- gem. traphal : 12 m²



Appartement 1

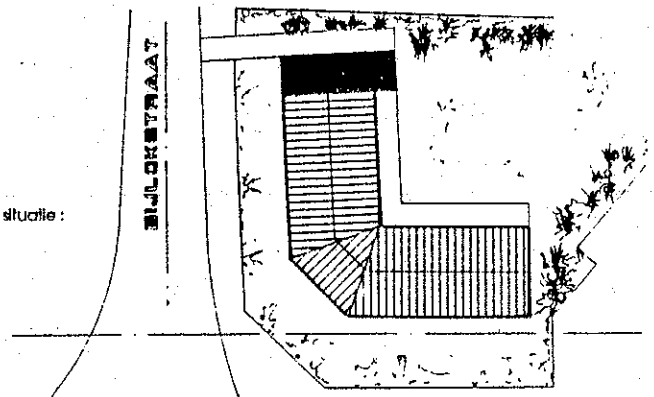
schaal / echelle : 1/100



noordpijl :



situatie :

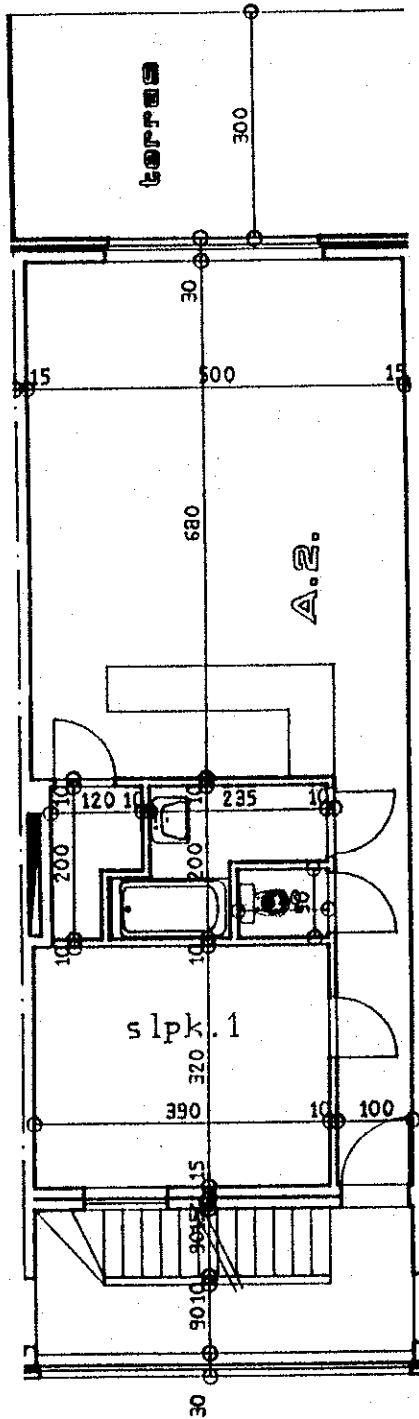


INPLANTING

ARCHITECTENBUREAU

Alternatief c.v.

alternatief atelier voor architectuur en expertise

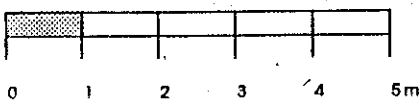


A2: gelijkvloers

- 1 slaapkamer
- opp. app.: 68 m²
- terras: 16 m²
- gem. traphal: 12 m²

Appartement 2

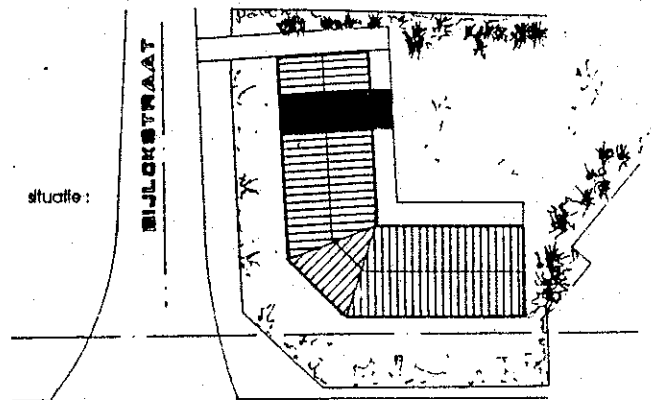
schaal / echelle: 1/100



noordpilt:



situatie:



INPLANTING

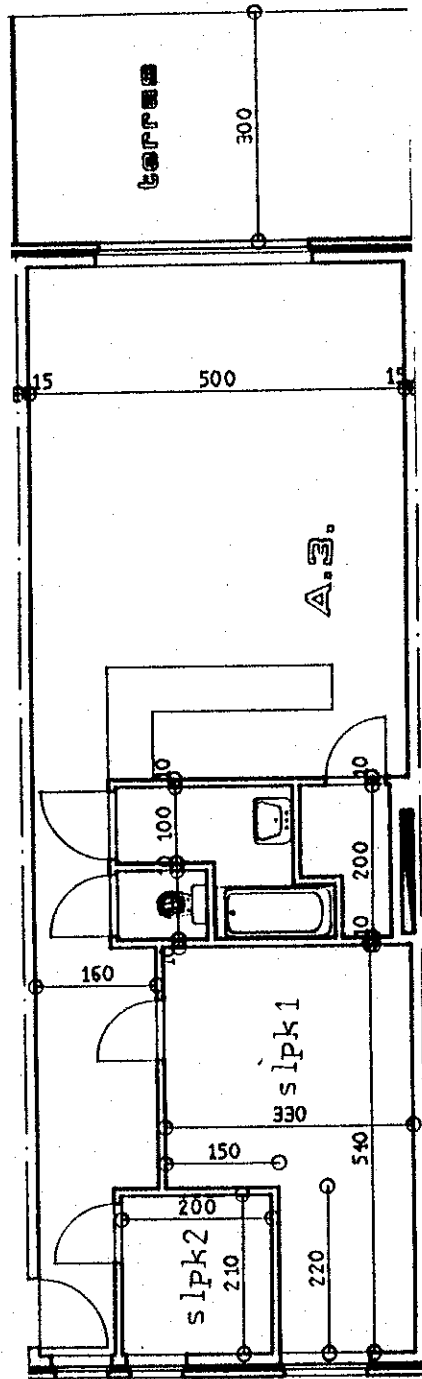
ARCHITECTURE & ENGINEERING

Alternatief c.v.

alternatief atelier voor architectuur en expertise

schoolbergenstraat 197 - 3010 kessel-lo - tel. 016. 25 29 54 - fax 016. 26 16 35

- A3 - gelijkvloers**
- 2 slaapkamers
 - opp. app.: 80 m²
 - terras : 16 m²
 - gem. traphal : 12 m²

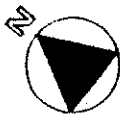


Appartement 3

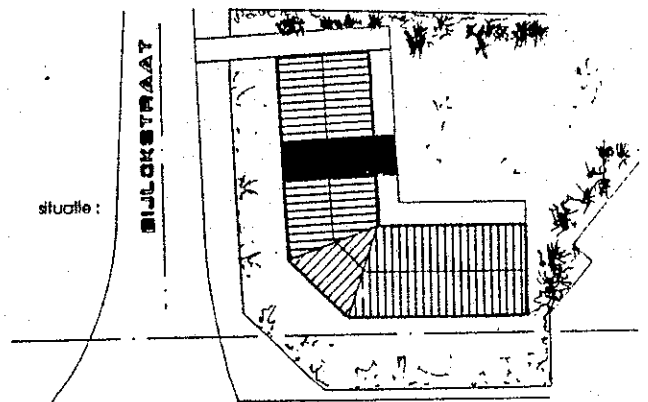
schaal / echelle : 1/100



noordplf :



situatie :



INPLANTING

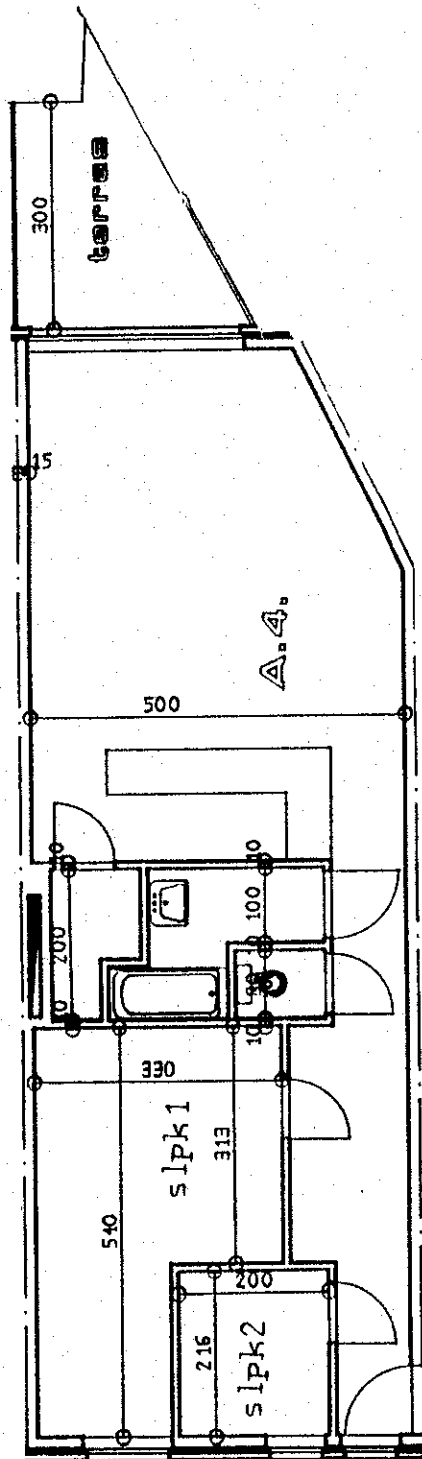
MICHIELLE STERNWERF

Alternatief c.v.
 alternatief atelier voor architectuur en expertise

schoolbergenstraat 197 - 3010 kessel-lo - tel. 016. 25 29 54 - fax 016. 26 16 35

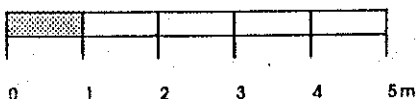
A4 gelijkvloers

- 2 slaapkamers
- opp. app. : 77 m²
- terras : 7 m²
- gem. traphal : 6 m²

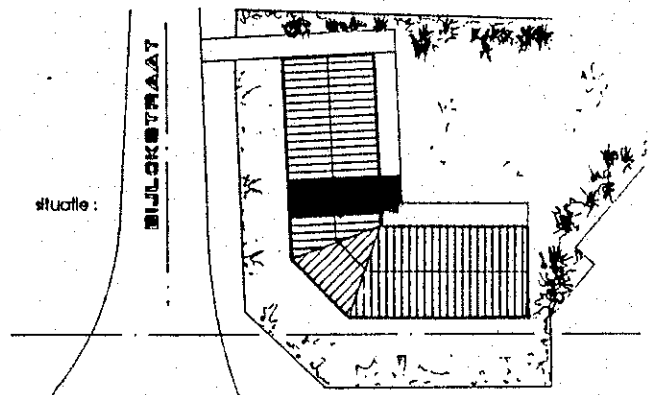


Appartement 4

schaal / echelle : 1/100



noordpijl :



situatie :

INPLANTING

MONOLIE STENWERK

Alternatief c.v.

alternatief atelier voor architectuur en expertise

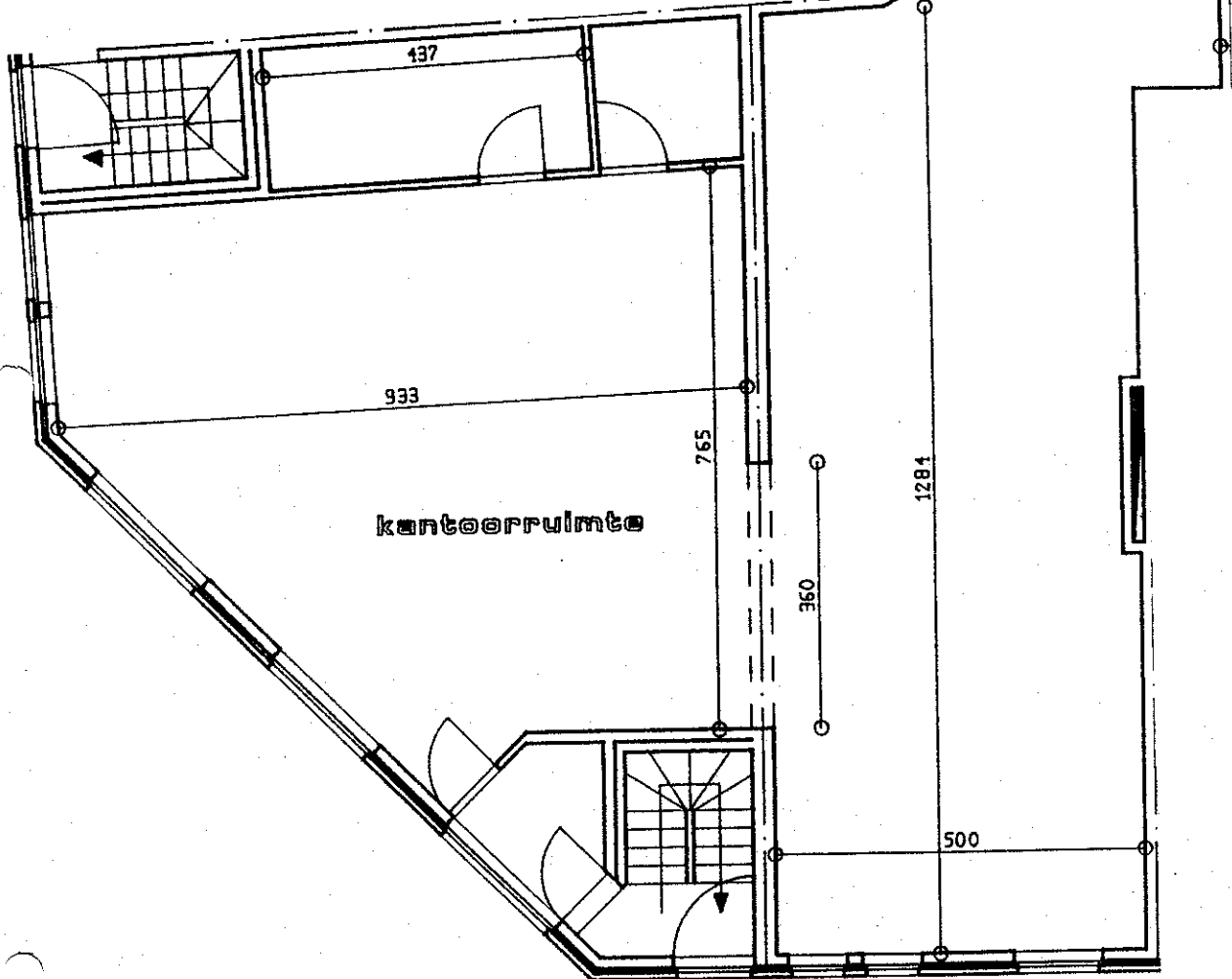
Manim n.v.

woningen te Herent

K

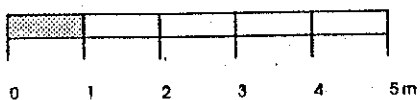
k - gelijkvloers

- opp. : 152 m²
- terras : 9,5 m²



Kantoorruimte

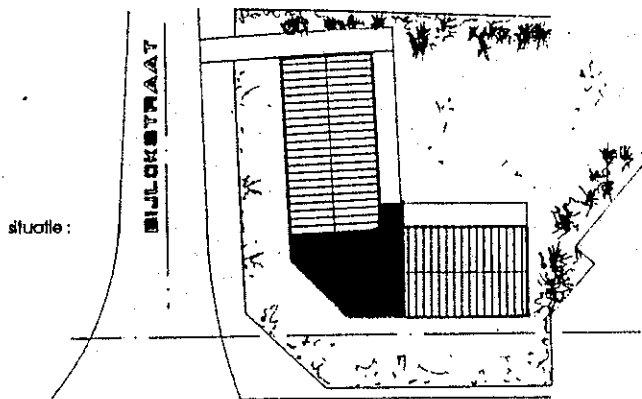
schaal / echelle : 1/100



noordpijl :



situatie :



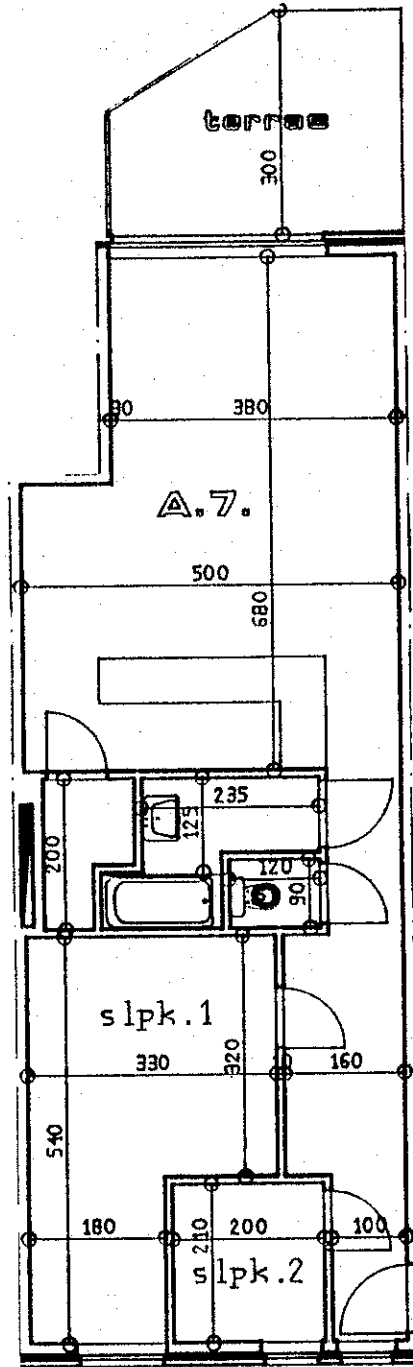
INPLANTING

MICHELLE STANWYD

Alternatief c.v.

alternatief atelier voor architectuur en expertise

schoolbergenstraat 197 - 3010 kessel-lo - tel. 016. 25 29 54 - fax 016. 25 16 35

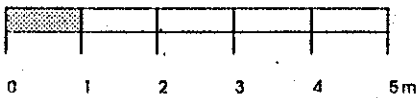


A7 gelijkvloers

- 2 slaapkamers
- opp. app. : 76 m²
- terras : 10 m²
- gem. traphal : 12 m²

Appartement 7

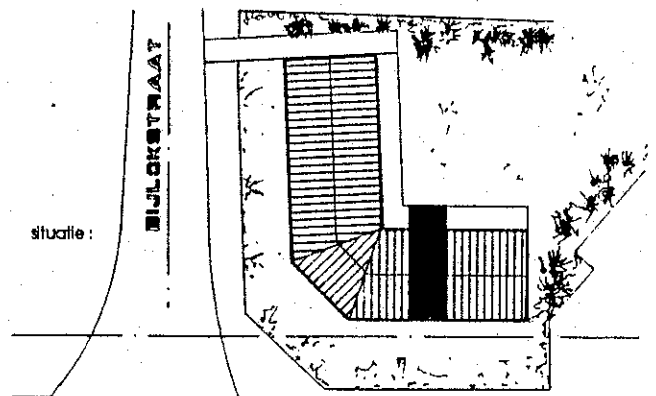
schaal / echelle : 1/100



noordpijl :



situatie :



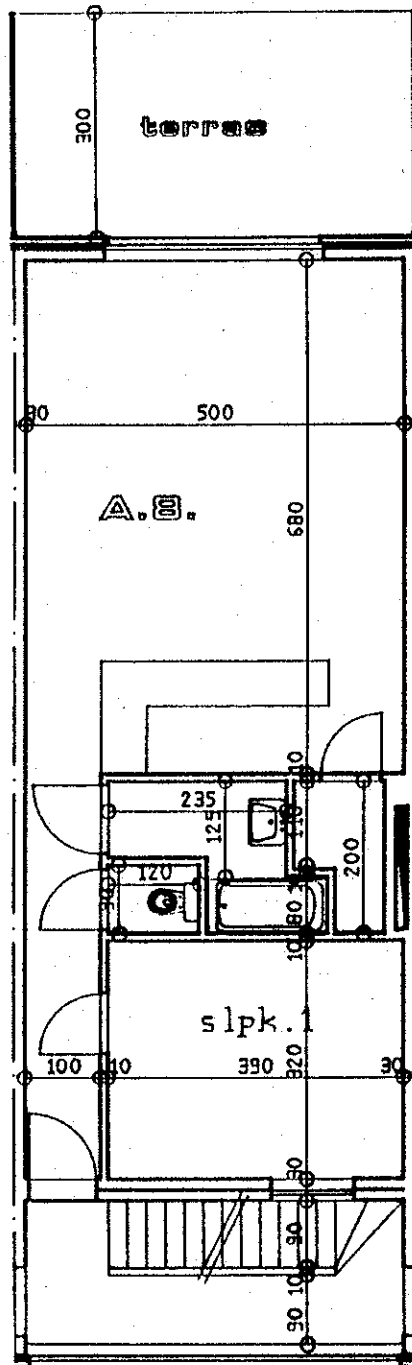
INPLANTING

MICHELLE STENWER

Alternatief c.v.

alternatief atelier voor architectuur en expertise

schoolbergenstraat 197 - 3010 kessel-lo - tel. 016. 25 29 54 - fax 016. 26 16 35



A8 - gelijkvloers:

- 1 slaapkamer
- opp. app. : 68 m²
- terras : 16 m²
- gem. traphal : 12 m²

Appartement 8

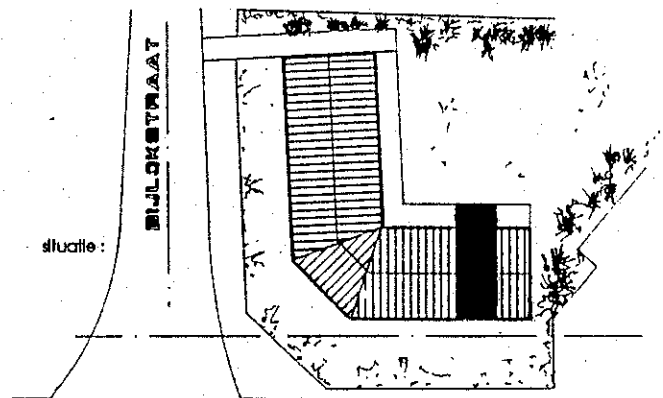
schaal / echelle : 1/100



noordpijl :



situatie :



INPLANTING

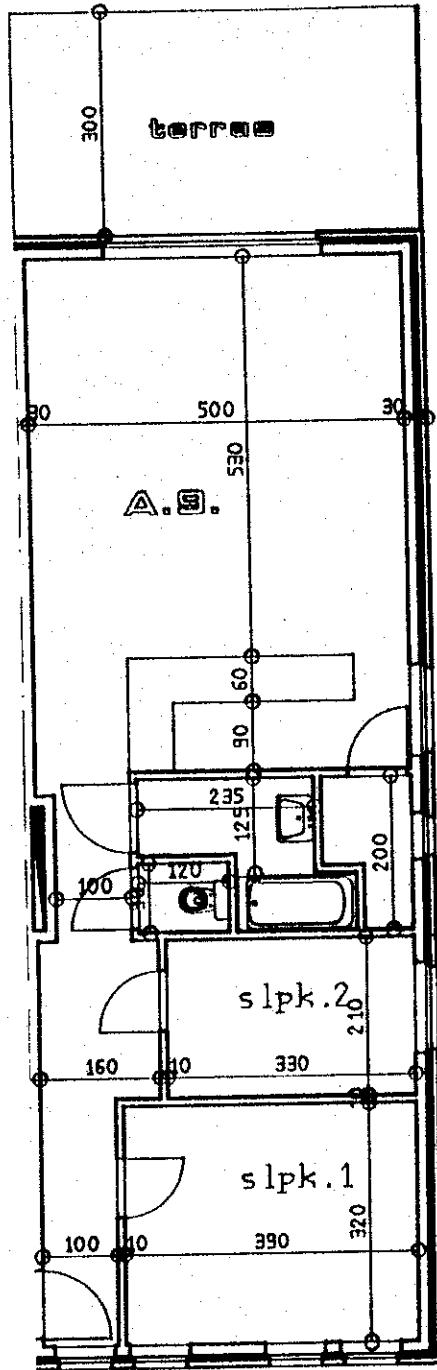
MICHELLE STREEWEG

Alternatief c.v.

alternatief atelier voor architectuur en expertise

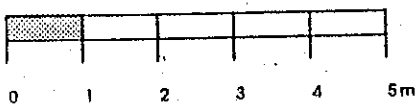
A9: gelijkvloers

- 2 slaapkamers
- opp. app. : 82 m²
- terras : 16 m²
- gem. traphal : 12 m²



Appartement 9

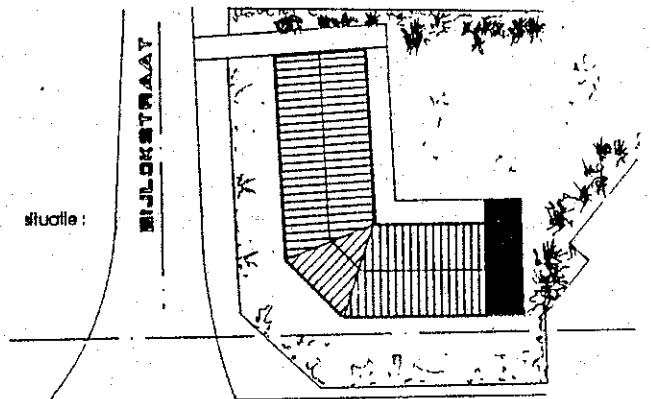
schaal / echelle : 1/100



noordpijl :



situatie :



INPLANTING

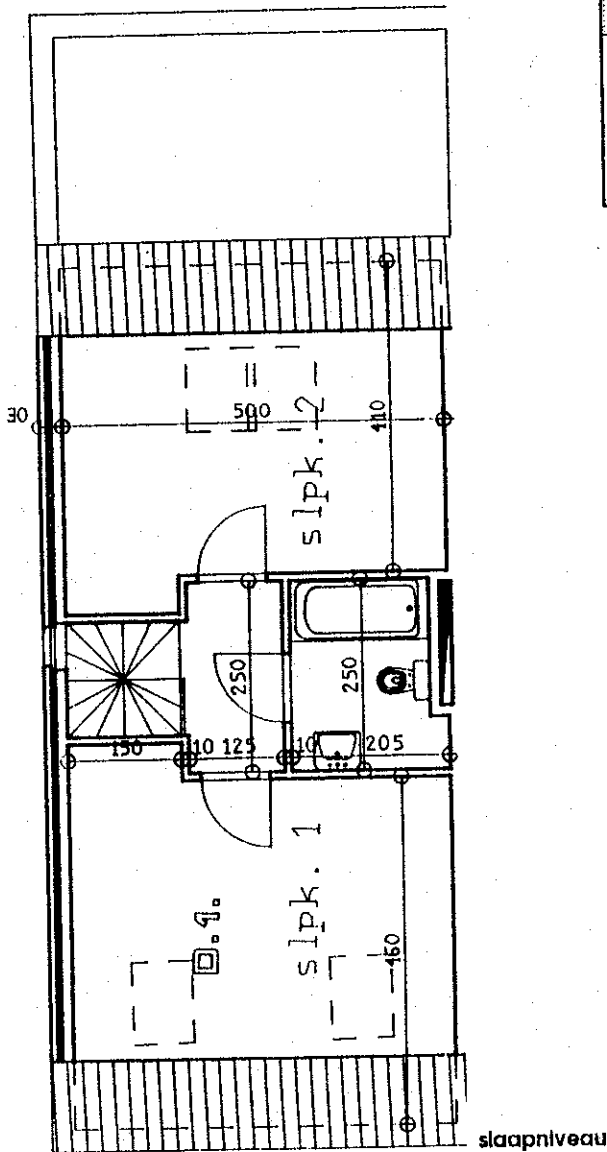
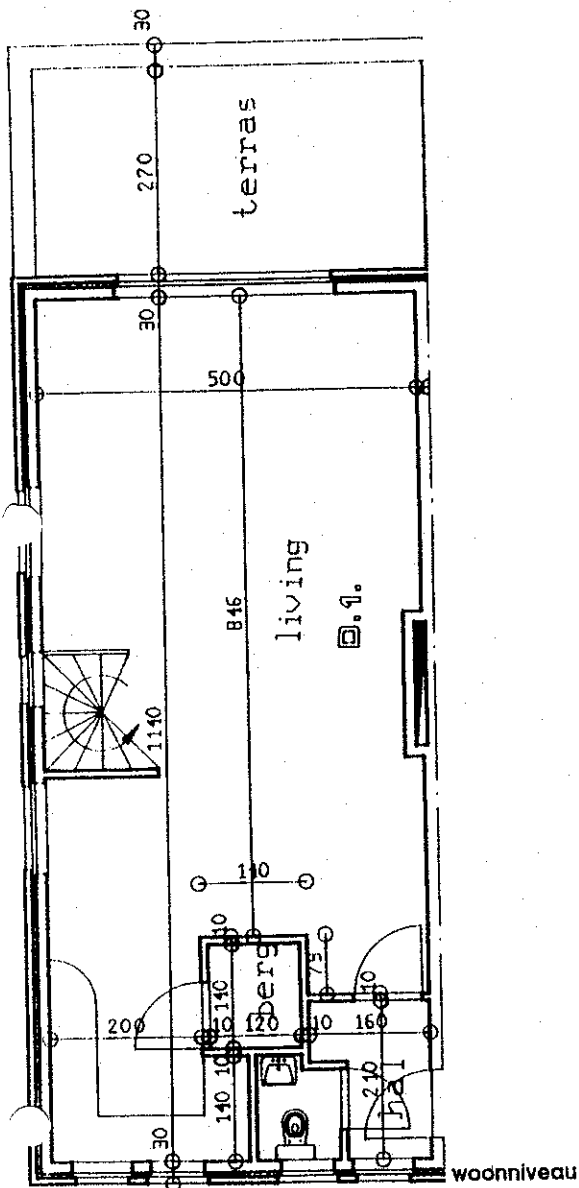
MECHIEL DE VRIJNEN

Alternatief c.v.

alternatief atelier voor architectuur en expertise

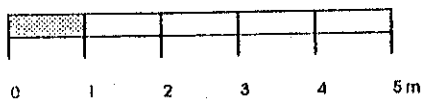
D1 verdieping

- 2 slaapkamers
- opp. dup. : 131 m²
- terras : 14 m²
- zolder : 26 m²
- gem. traphal : 12 m²



Duplexwoning 1

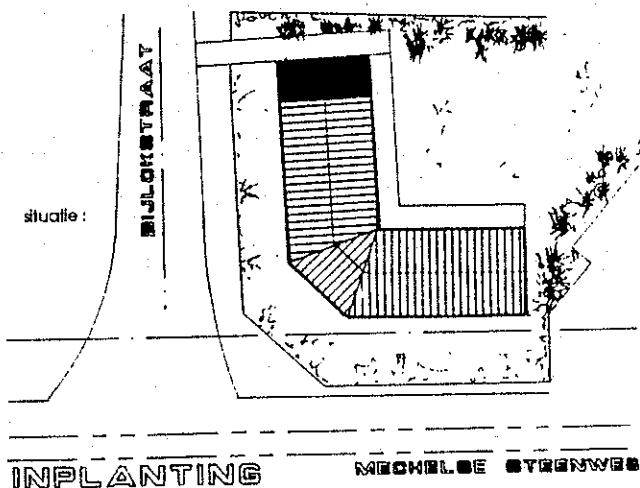
schaal / echelle : 1/100



noordpijl :



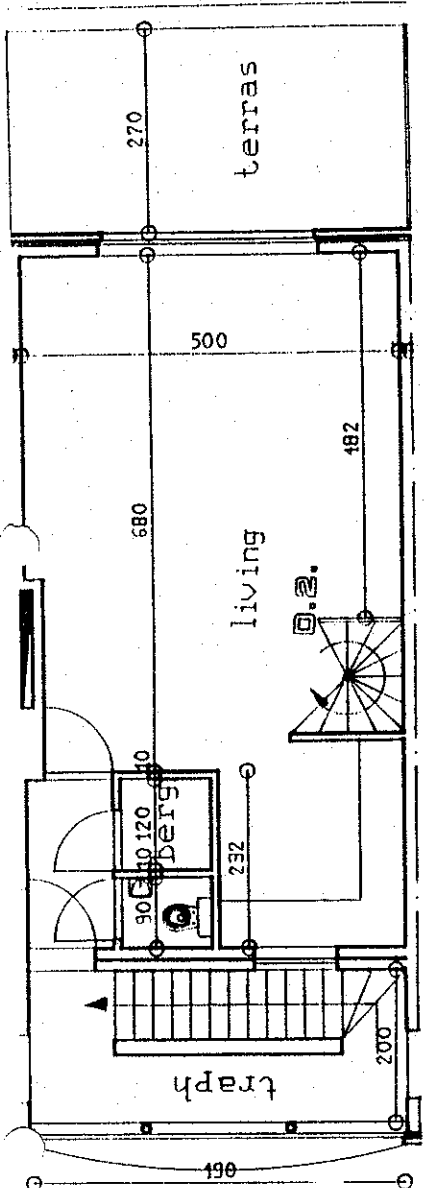
situatie :



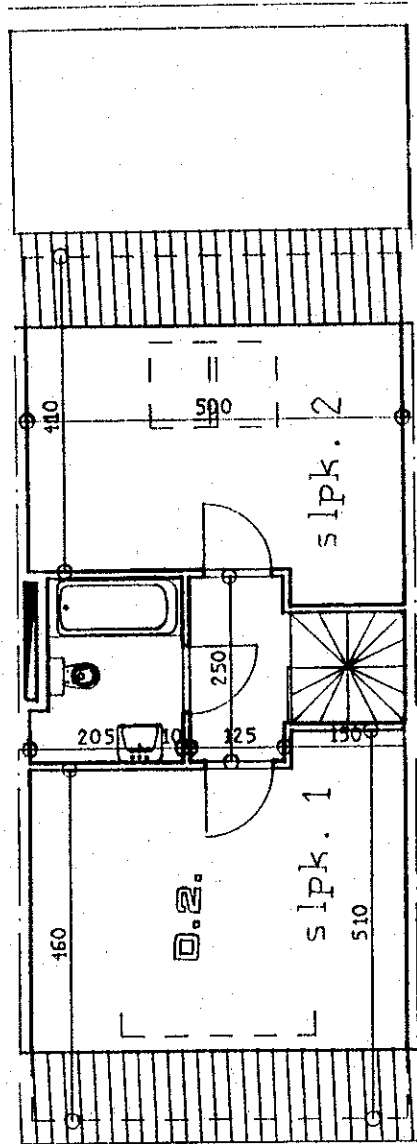
Alternatief c.v.

alternatief atelier voor architectuur en expertise

- D2 - verdieping**
- 2 slaapkamers
 - opp. dup. : 116 m²
 - terras : 14 m²
 - zolder : 26 m²
 - gem. traphal : 12 m²



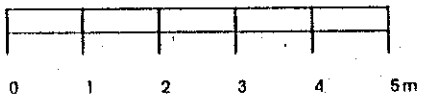
woonniveau



slaapniveau

Duplexwoning 2

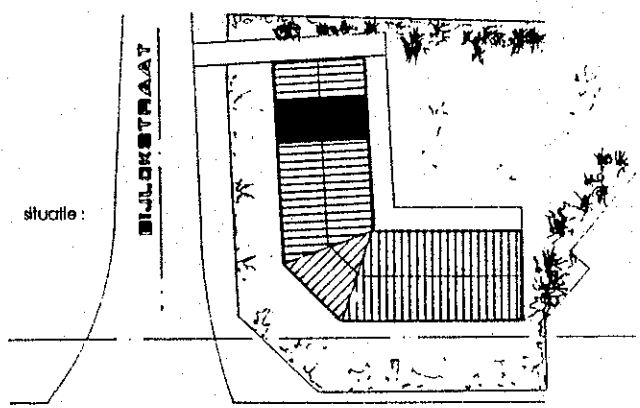
schaal / echelle : 1/100



noordpijl :



situatie :



INPLANTING

ARCHITECTUUR EN INTERIEUR

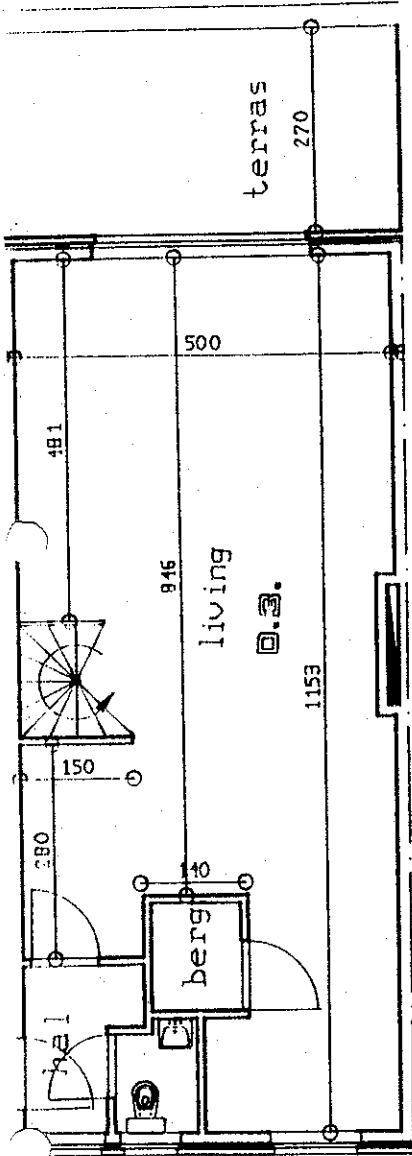
Alternatiet c.v.

alternatiet atelier voor architectuur en expertise

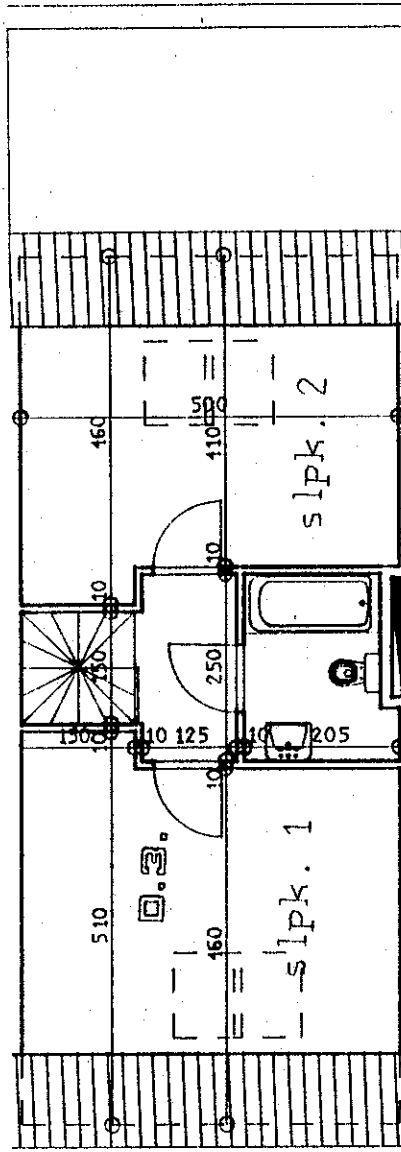
schoolbergenstraat 197 - 3010 kessel-lo - tel. 016. 25 29 54 - fax 016. 26 16 35

D3 - verdieping

- 2 slaapkamers
- opp. dup. : 127 m²
- terras : 14 m²
- zolder : 26 m²
- gem. traphal : 12 m²



woonniveau



slaapniveau

Duplexwoning 3

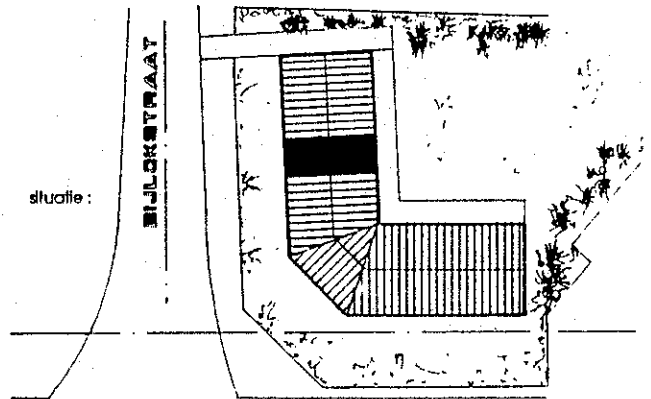
schaal / echelle : 1/100



noordpijl :



situatie :

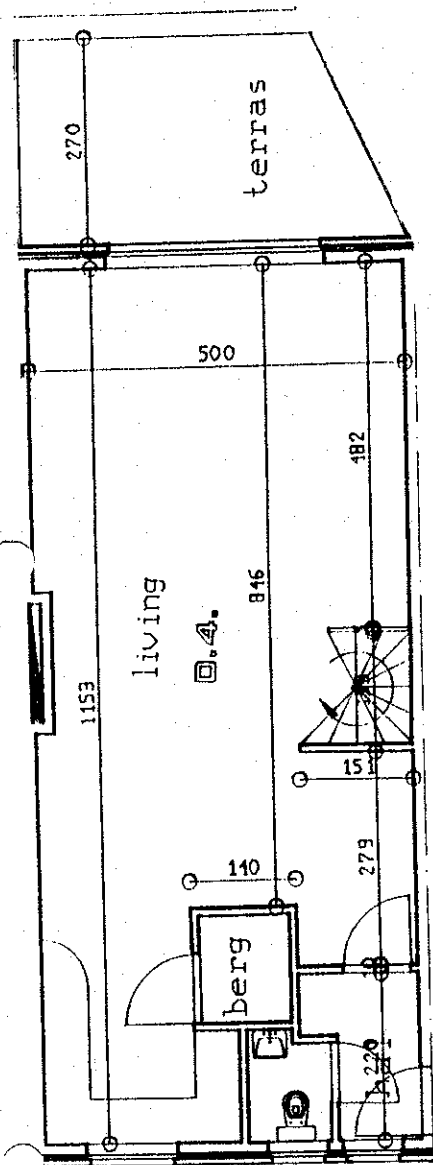


INPLANTING

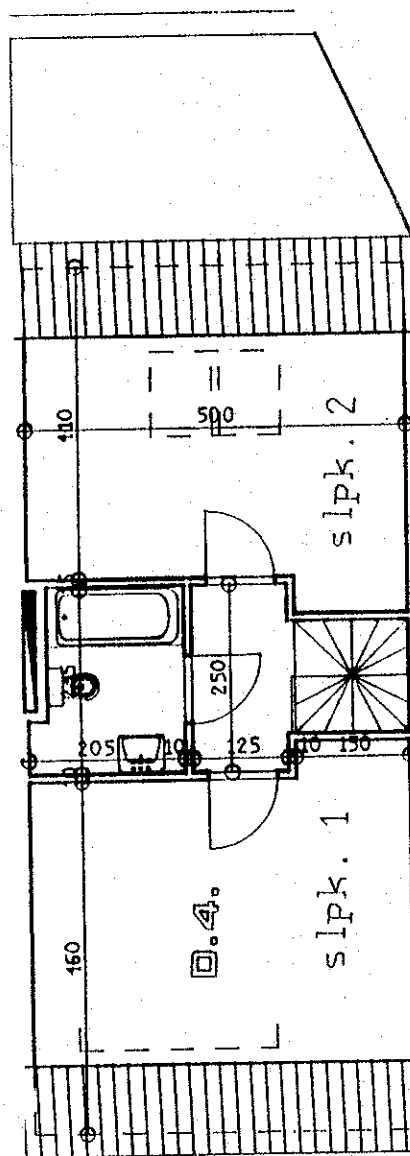
MICHEL DE STERNWER

Alternatief c.v.

alternatief atelier voor architectuur en expertise



woonniveau

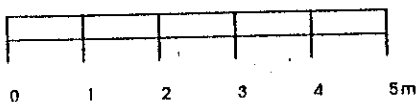


slaapniveau

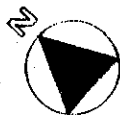
- D4 verdieping**
- 2 slaapkamers
 - opp. dup. : 127 m²
 - terras : 12 m²
 - zolder : 26 m²
 - gem. traphal : 6 m²

Duplexwoning 4

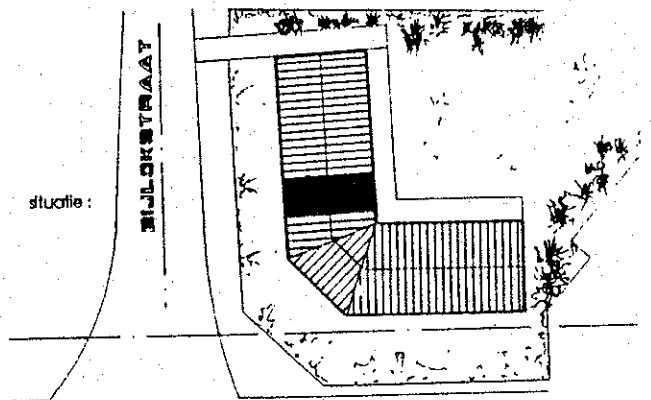
schaal / echelle : 1/100



noordpijl :



stufatie :



INPLANTING

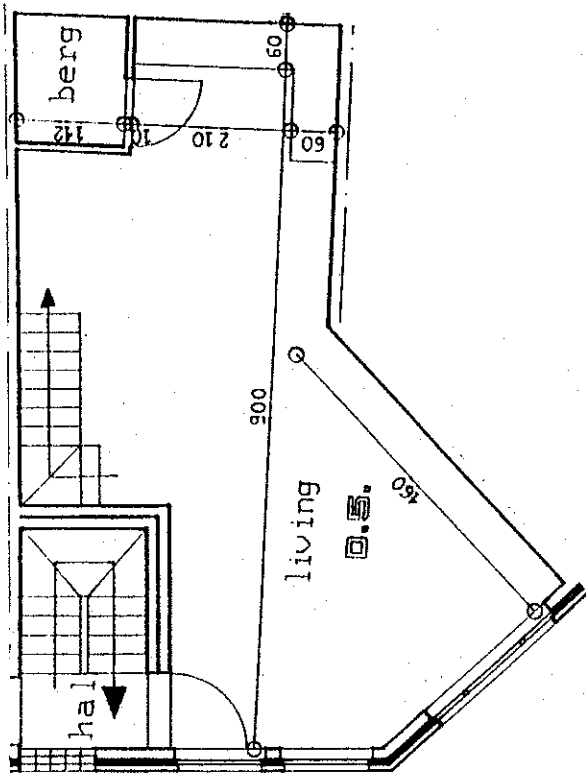
MICHELLE TERNIER

Alternatief c.v.

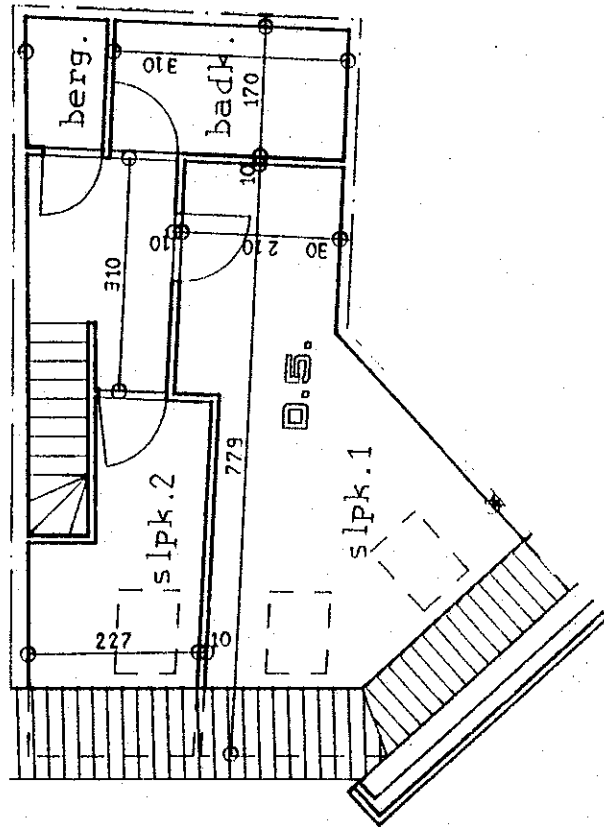
alternatief atelier voor architectuur en expertise

schoolbergenstraat 197 - 3010 kessel-lo - tel. 016. 25 29 54 - fax 016. 26 16 35

D5 - verdieping
- 2 slaapkamers
- opp. dup. : 105 m ²
- terras : /
- zolder : 26 m ²
- gem. traphal : 6 m ²



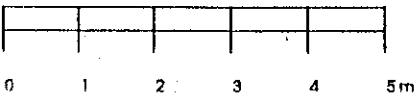
woonniveau



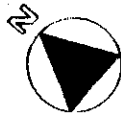
slaapniveau

Duplexwoning 5

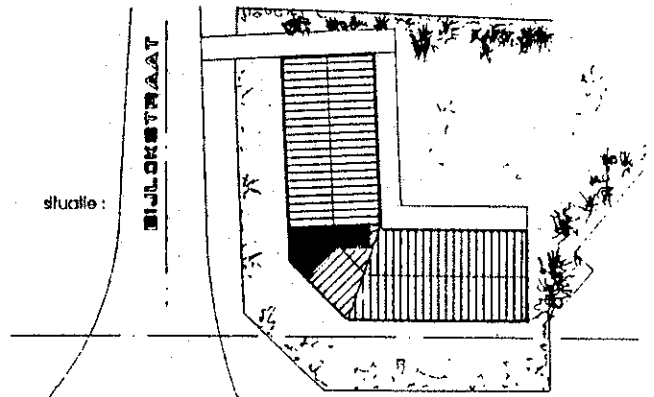
schaal / echelle : 1/100



noordpijl :



situatie :



INPLANTING

MANIM N.V. HERENT

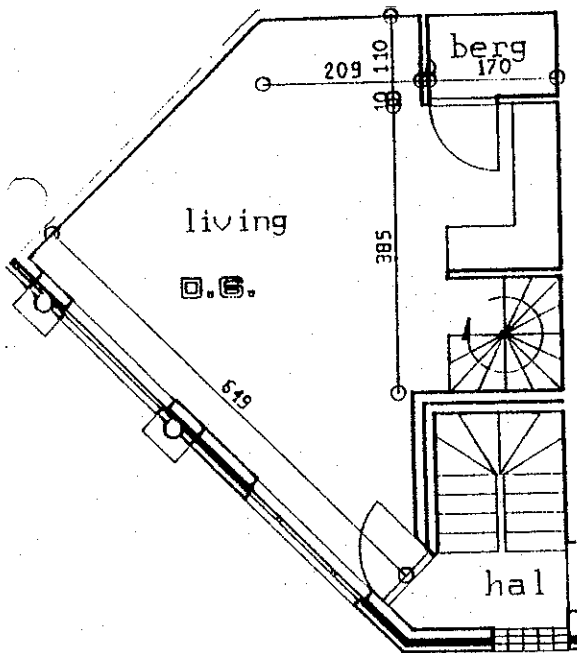
Alternatief c.v.

alternatief atelier voor architectuur en expertise

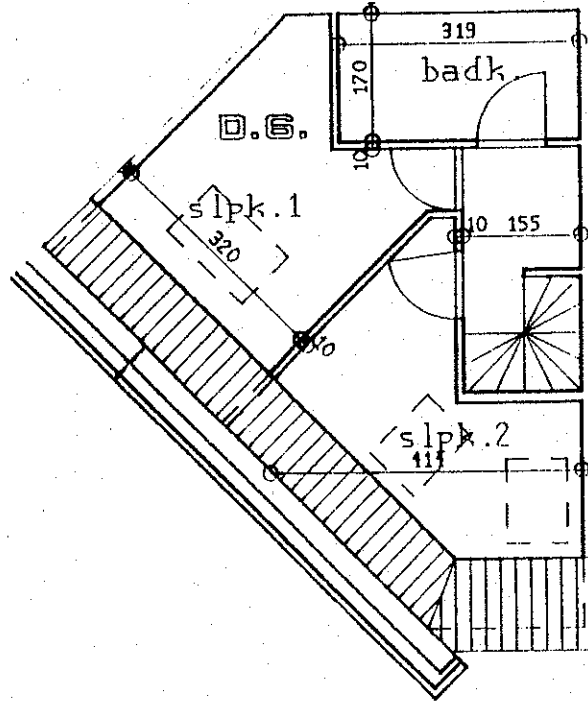
schoolbergenstraat 197 - 3010 kessel-lo - tel. 016. 25 29 54 - fax 016. 26 16 35

D6: verdieping

- 2 slaapkamers
- opp. dup. : 85 m²
- terras : /
- zolder : 12 m²
- gem. traphal : 6 m²



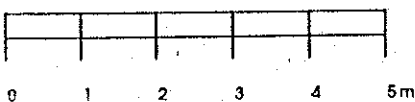
woonniveau



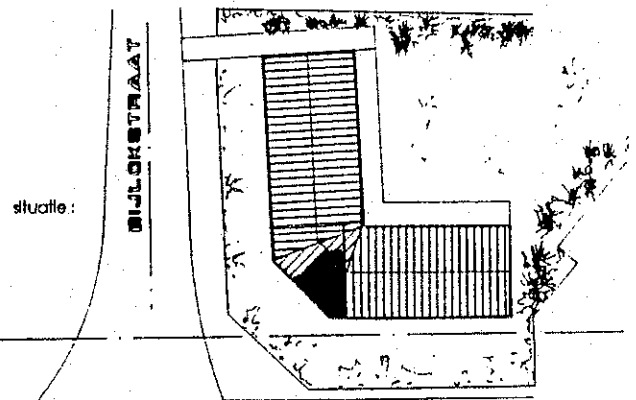
slaapniveau

Duplexwoning 6

schaal / echelle : 1/100



noordplf :



INPLANTING

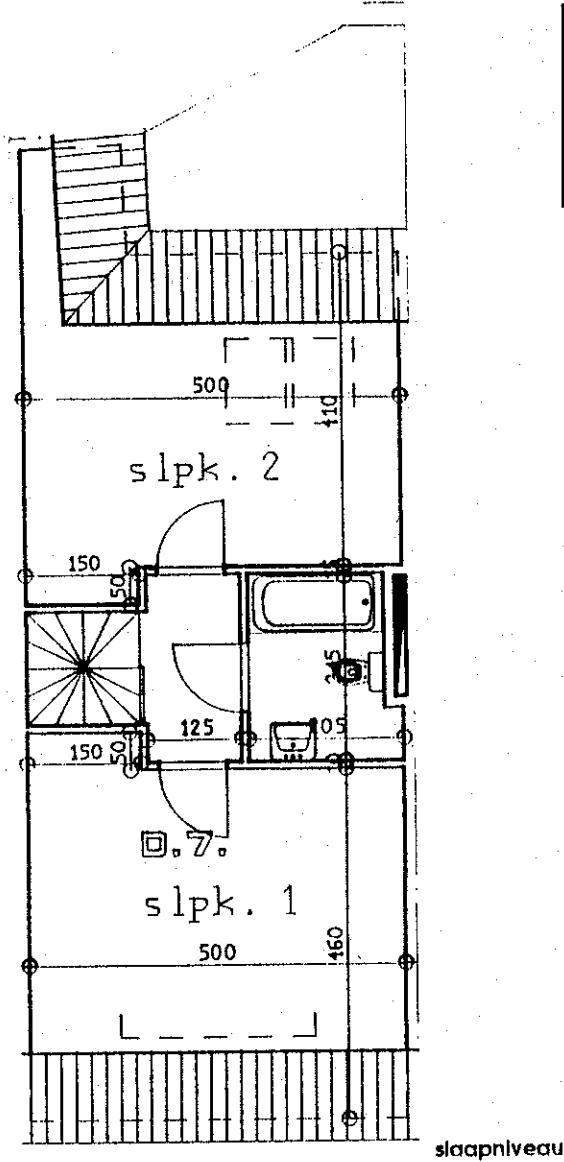
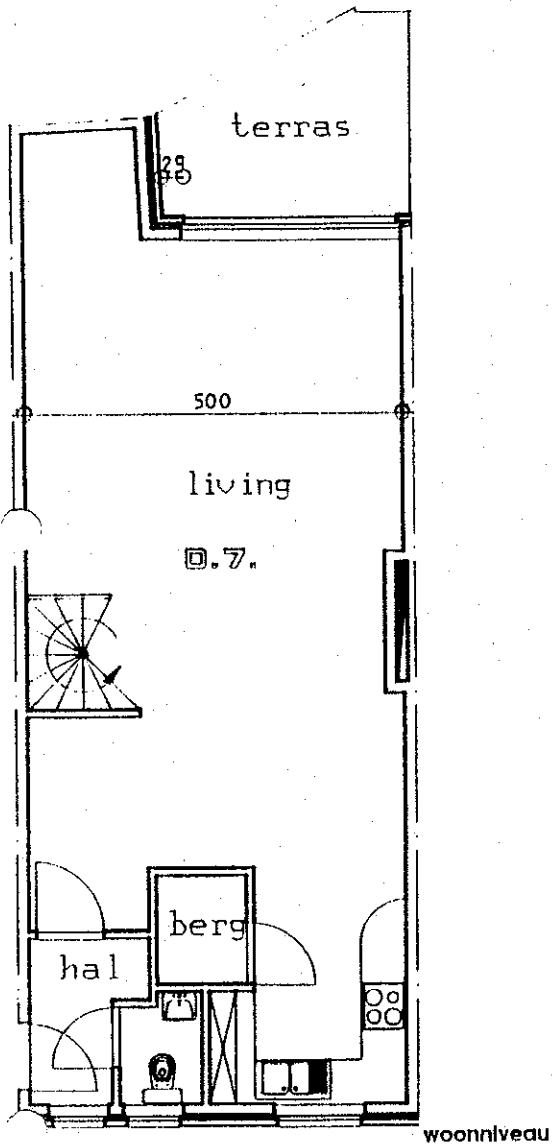
HOOFDSTRAAT

Alternatief c.v.

alternatief atelier voor architectuur en expertise

D7 - verdieping

- 2 slaapkamers
- opp. dup. : 132 m²
- terras : 7 m²
- zolder : 26 m²
- gem. traphal : 6 m²



Duplexwoning 7

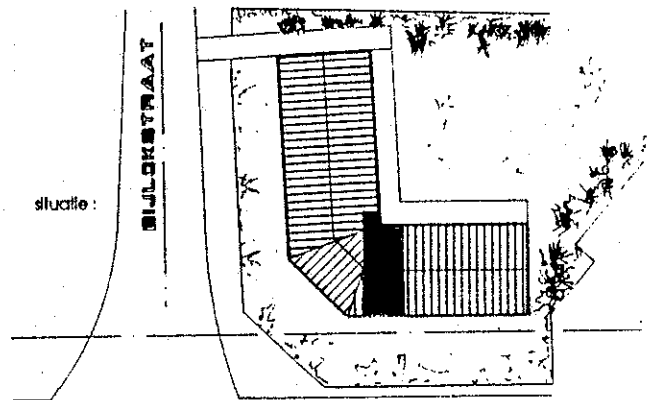
schaal / echelle : 1/100



noordpijl :



situatie :

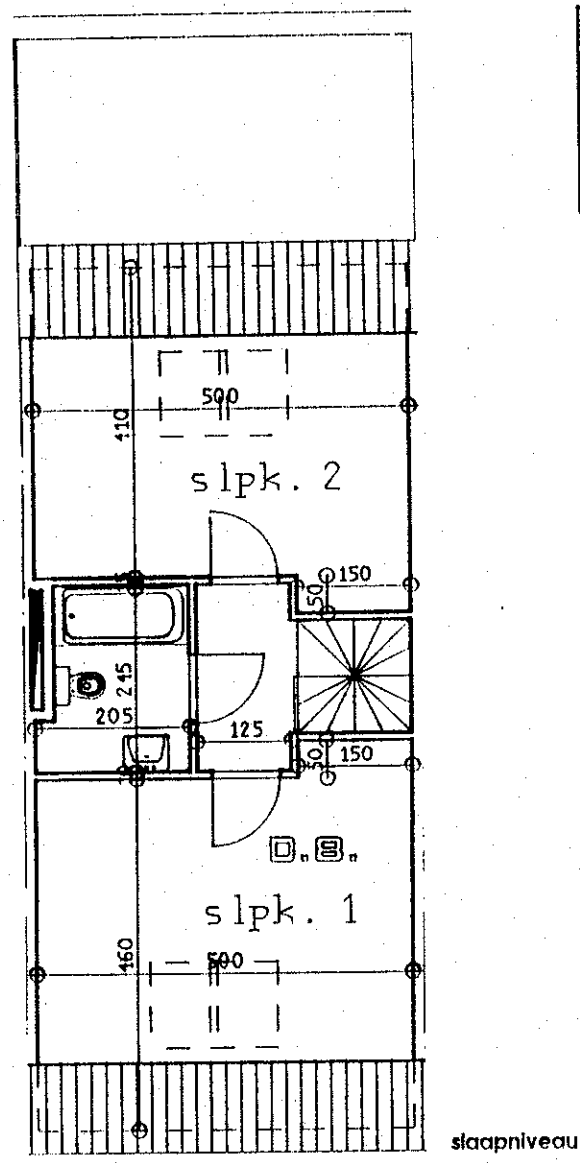
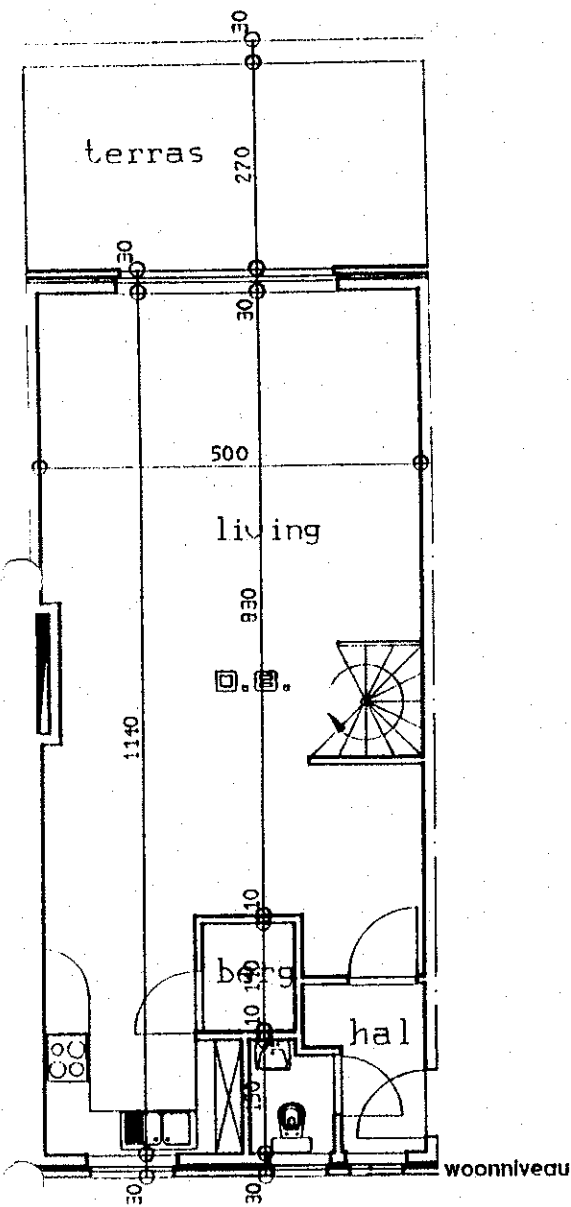


INPLANTING

MICHELLE STREWER

Alternatief c.v.

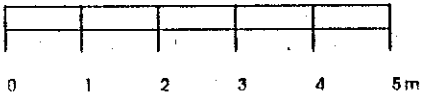
alternatief atelier voor architectuur en expertise



- D8 - verdieping**
- 2 slaapkamers
 - opp. dup. : 127 m²
 - terras : 14 m²
 - zolder : 26 m²
 - gem. traphal : 12 m²

Duplexwoning 8

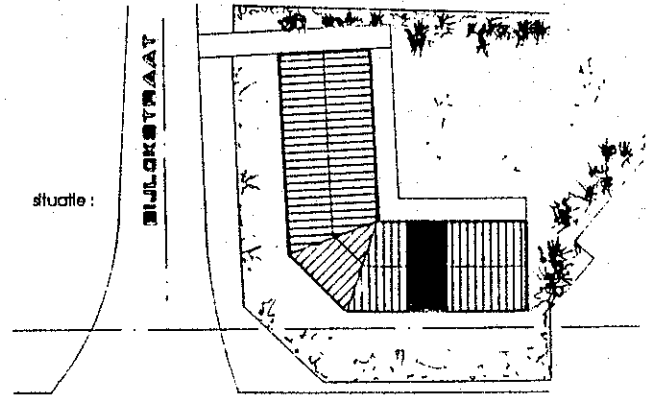
schaal / echelle : 1/100



noordpijl :



situatie :



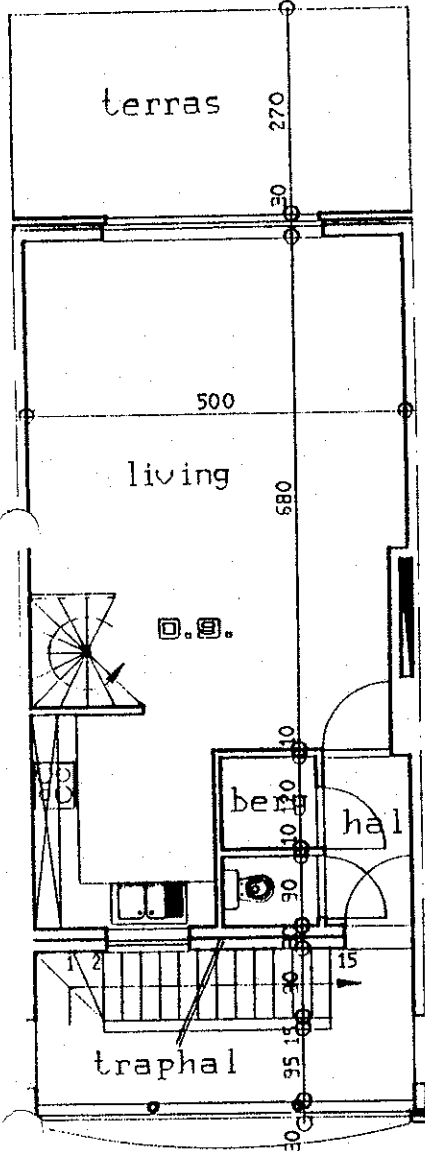
INPLANTING

RIJWEG ■ TRAPWEG

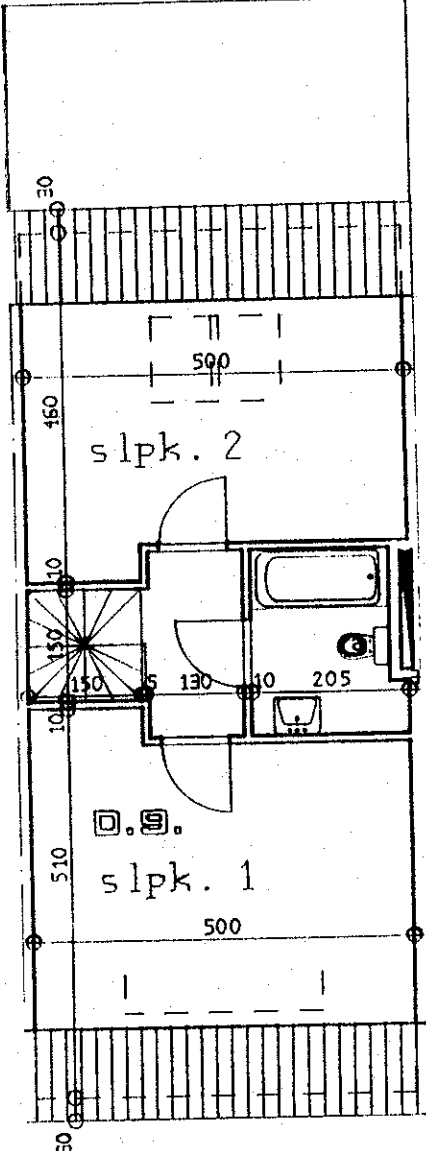
Alternatief c.v.

alternatief atelier voor architectuur en expertise

schoolbergensstraat 197 - 3010 kessel-lo - tel. 016. 25 29 54 - fax 016. 26 16 35



woonniveau

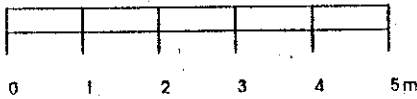


slaapniveau

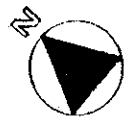
- D9 verdieping**
- 2 slaapkamers
 - opp. dup. : 116 m²
 - terras : 14 m²
 - zolder : 26 m²
 - gem. traphal : 12 m²

Duplexwoning 9

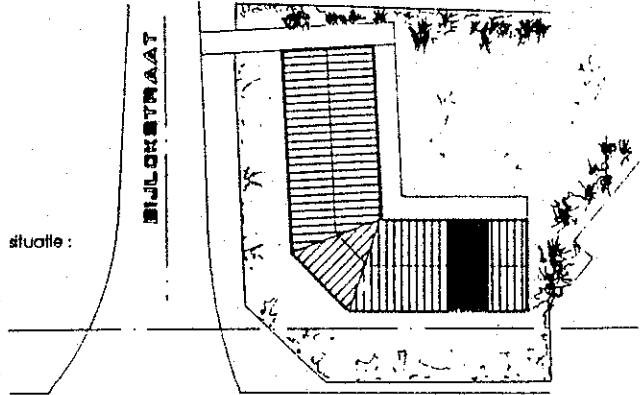
schaal / echelle : 1/100



noordpijl :



situatie :



INPLANTING

MANIM N.V. - HERENT

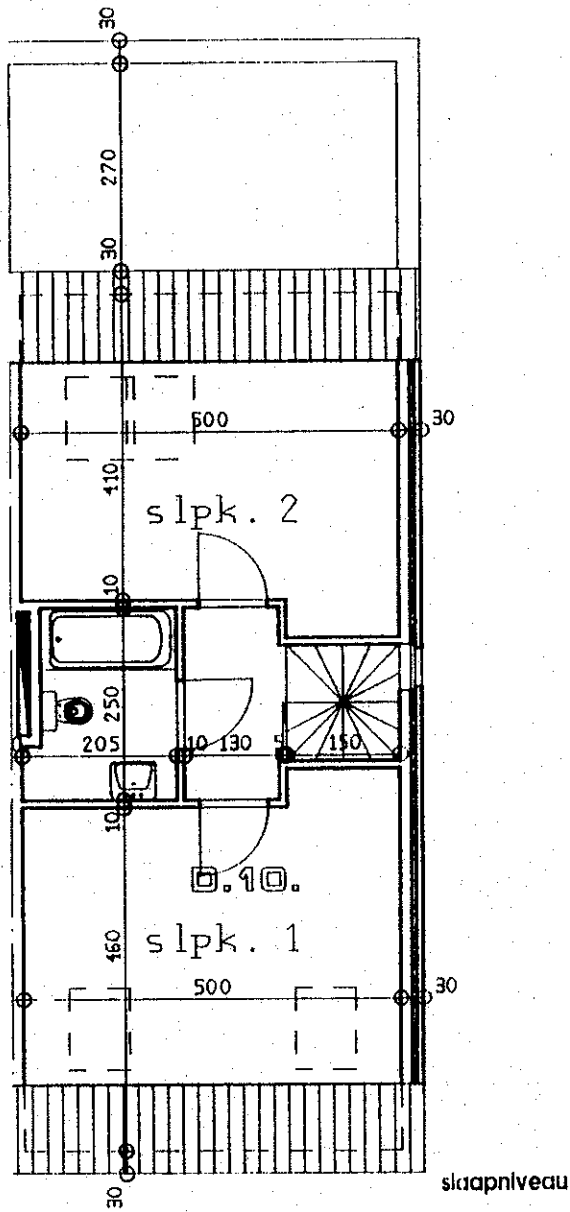
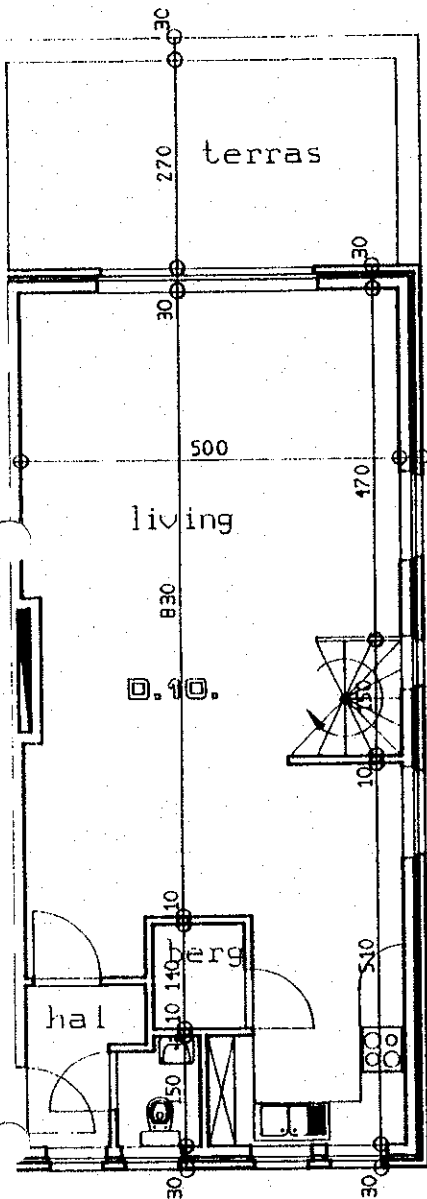
Alternatief c.v.

alternatief atelier voor architectuur en expertise

schoolbergenstraat 197 - 3010 kessel-lo - tel. 016. 25 29 54 - fax 016. 26 16 35

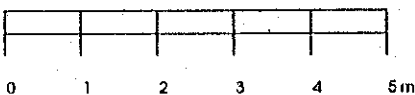
D10 - verdieping

- 2 slaapkamers
- opp. dup. : 131 m²
- terras : 14 m²
- zolder : 26 m²
- gem. traphal : 12 m²



Duplexwoning 10

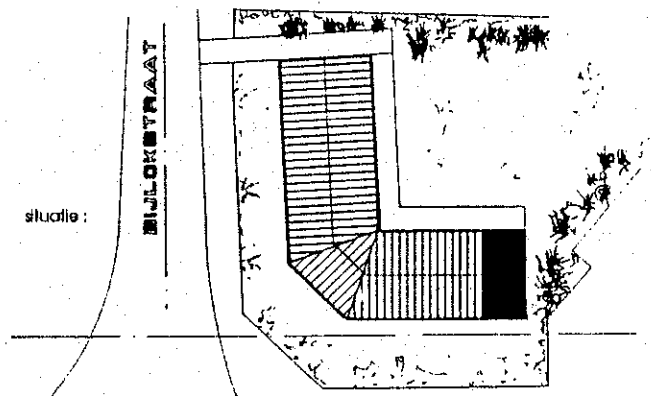
schaal / echelle : 1/100



noordpijl :



situatie :



INPLANTING

NECHLE STEENWEG

Alternatief c.v.

alternatief atelier voor architectuur en expertise