

4 WONINGEN DROGENHOF - LUBBECK

WONING 1 - N° 32A

maten en inrichting zijn enkel indicatief
alle oppervlakematen zijn brutomaten

OPPERVLAKTE

172m²

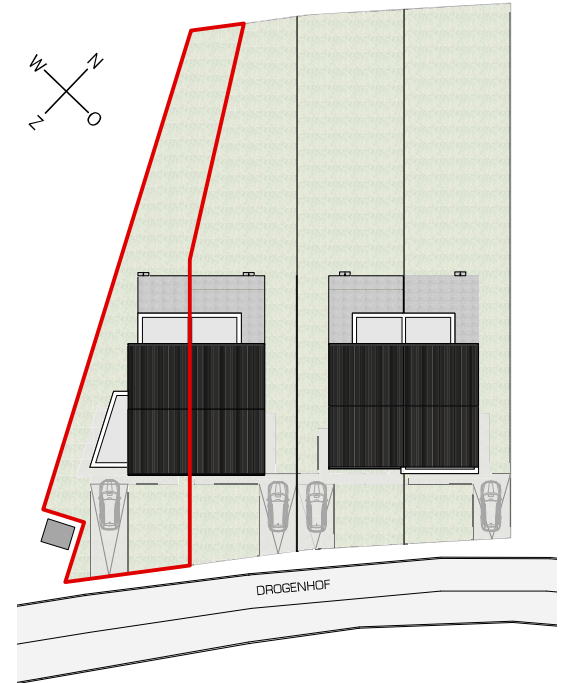
TERRAS

17m²

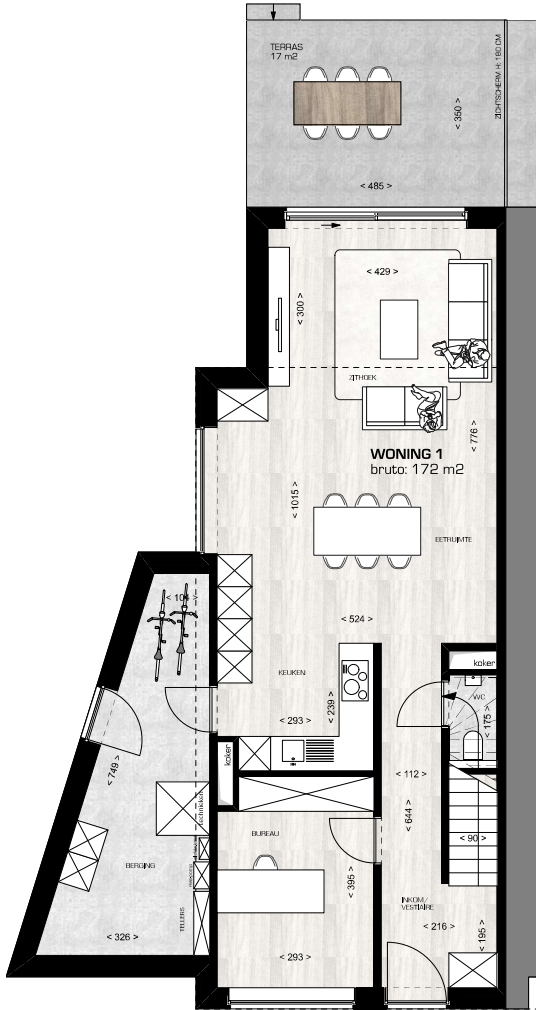
PERCEEL

423m²

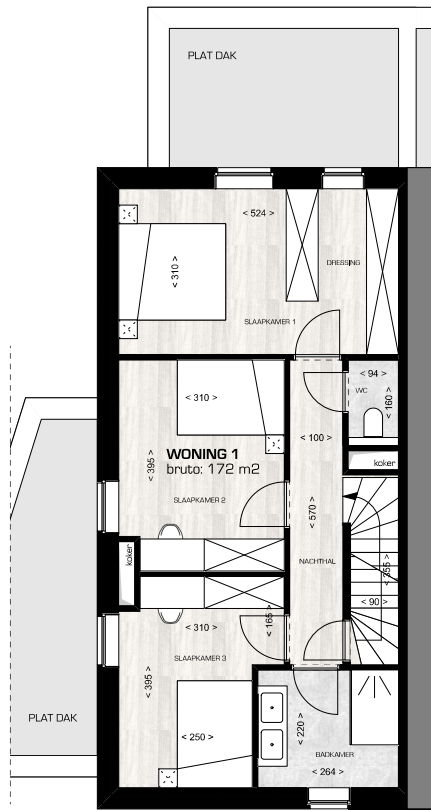
ORIËNTATIE



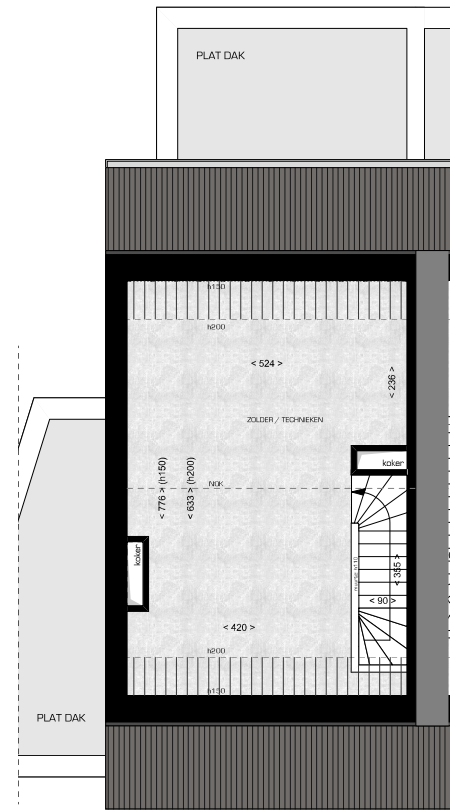
INPLANTINGSPLAN



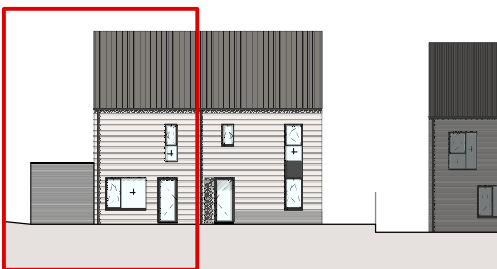
GELIJKVLOERS



VERDIEPING



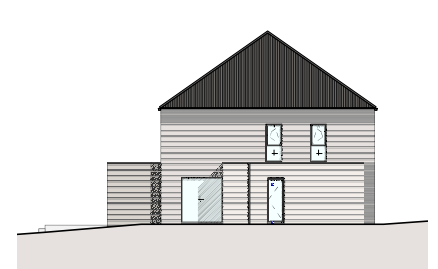
ZOLDER



VOORGEVEL



ACHTERGEVEL



ZIJGEVEL

